



ClearWeb 7.0 is here!

ClearCase itself does not support interactive triggers for ClearCase web-users. ClearCase defines interactive triggers as any that provides GUI notification (i.e. use of clearprompt) or writes to stdout or stderr. Given that definition, many user written triggers and many ClearTrigger features are interactive. ClearWeb seamlessly integrates with the ClearCase Web interface so that ClearCase web users see writes to stdout or stderr and have access to interactive dialogs just like ClearCase non-web users. Furthermore, the web user has the same "wait-for-reply" abilities that local users have for dialogs. *VOB security and Time Security are implemented so now you can control what VOBs your users see and when they see it.* In previous releases you could not get interactive triggers to work for both ClearCase Web Clients and ClearCase Remote simultaneously (as they interfered with each other). ClearCase itself does not distinguish between the two. **ClearWeb 7.0 has a fully integrated full web-enabled Vtree Browser now the ClearCase Vtree Browser so familiar locally is available for use over the web.**

The Native ClearCase Web interface only supports a limited set of cleartool commands (checkout, checkin, uncheckout, update) ClearWeb extends this by allowing for over 120 more cleartool commands and an unlimited number of non-ClearCase commands.

ClearWeb 7.0 provides these new and improved capabilities:

- Web-Enabled Vtree Browsers (new to 7.0)
- Open Source Code Search Integration (new to 7.0)
- VOB/Directory/User Visibility Matrix
- Time/User Visibility Matrix
- GUI Administration Console
- ClearCase/ClearQuest integration support
- Interactive Dialog Support
- STDOUT/STDERR Support
- Supplemental Command Support
- Peer-to-Peer ClearWeb Mail
- Administrator Alerts
- Online Virtual Help Application
- Simultaneous ClearCase Web Client and CRC support

Use ClearWeb to help your organization and save money:

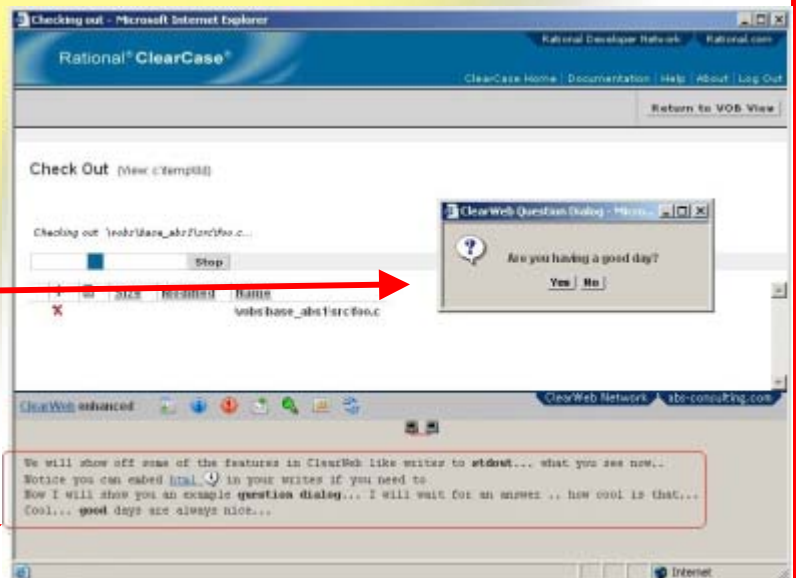
- Reduce ClearCase Multisite license costs...
- Make better use of the ClearCase licenses already purchased...
- Allow distributed users to use your local Defect Tracking Database through your local defect tracking integration...

Interactive Dialog and ClearQuest Support

Interactive dialogs that were only available for local native ClearCase users are now also available for ClearCase web users. ClearWeb offers Question, Prompt, Single-selection and Multi-selection dialogs. **ClearWeb also supports the ClearCase/ClearQuest integration over the web.**

STDOUT/STDERR Support

With ClearWeb, stdout and stderr writes are also redirected to the web-client and are displayed on the ClearCase web.



(Over for more on ClearWeb)



Supplemental Command Support

Now you can make new label types and apply those labels along with hundreds of other options. Over 90% of the cleartool subcommands are supported. Now the Web interface is almost like working at the office.

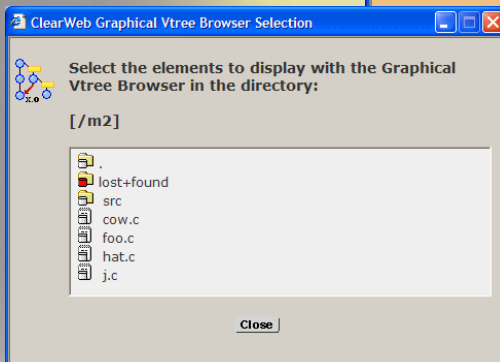
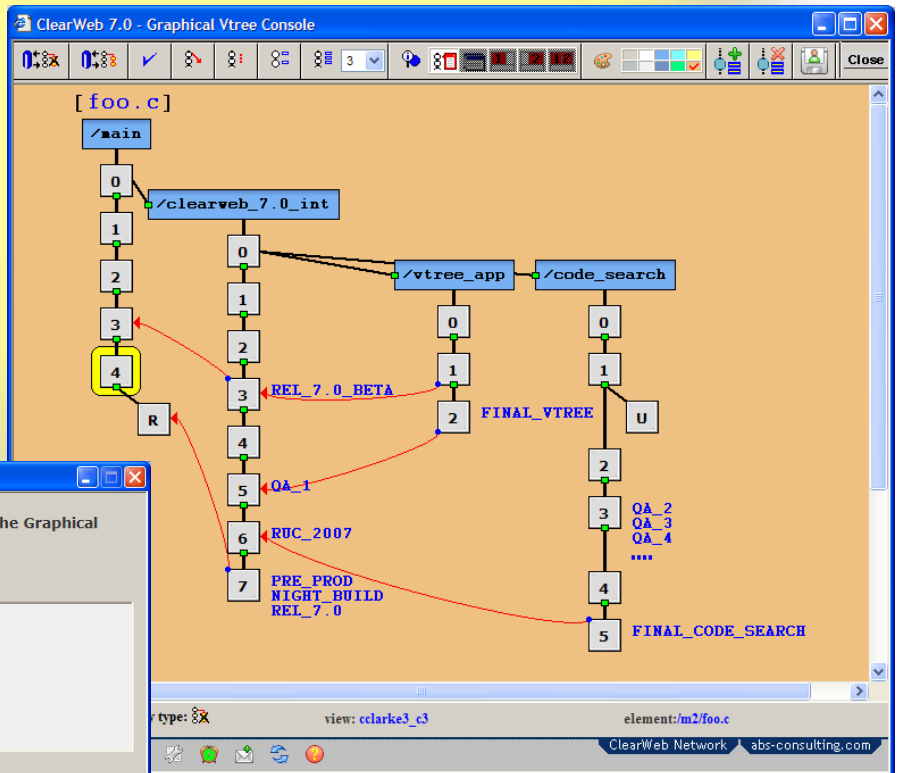
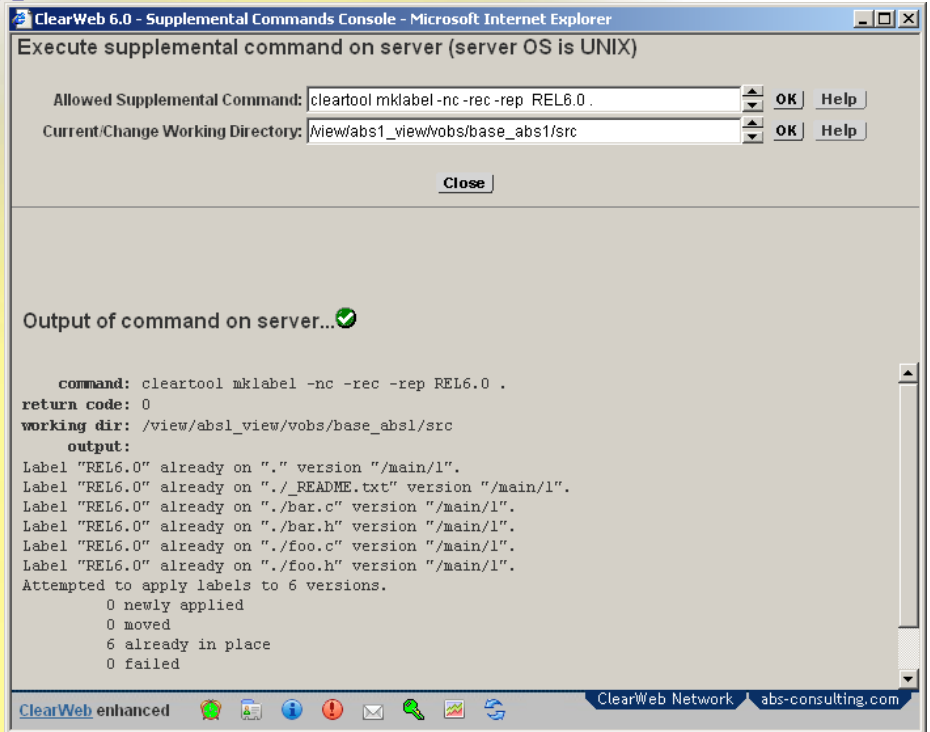
Non-ClearCase Commands are supported as well.

Your administrator decides which commands you will be allowed to perform remotely.

Now you can apply that label and start that build from home, a hotel or the nearest coffee shop with a web browser.

Web-Enabled Vtree Browser

ClearWeb provides Web-enabled Vtree Browsers that are similar form and function to the local ClearCase Vtree Browser available in the native ClearCase client. ClearWeb users can use the ClearWeb Vtree Browser to view element hierarchy, and metadata as well as apply, move and remove ClearCase labels. The ClearWeb Vtree Browser has display speeds that rival that of the local native ClearCase client Vtree, all with the same look-n-feel with which ClearCase users have become accustomed.

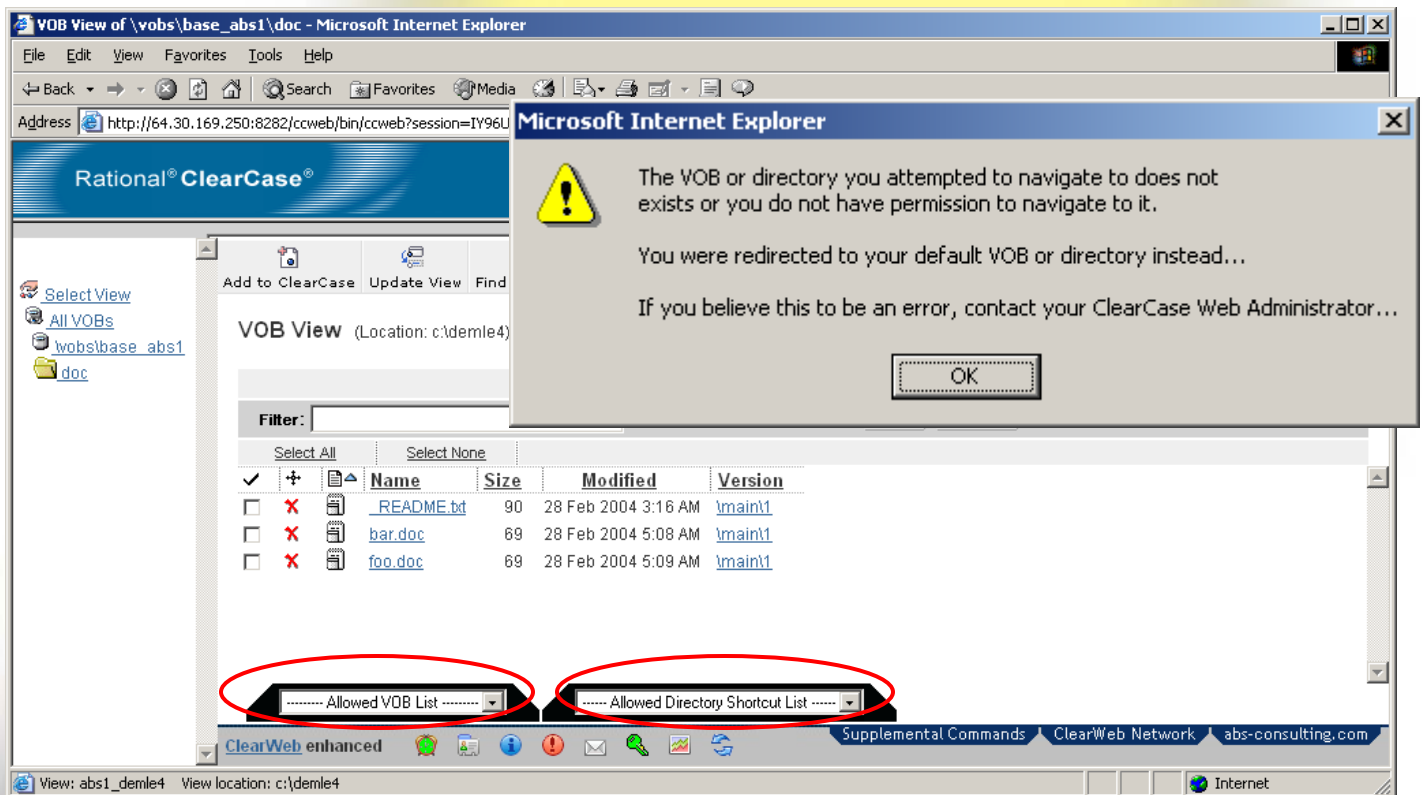




User/VOB/Directory Visibility Matrix

ClearWeb also allows for the creation of a **User/Vob/Directory Visibility Matrix** so that the ClearWeb Administrator can prevent web users from viewing or navigating to select VOBs or Directories. Only the VOBs or directories allowed by the administrator are accessible to the web user. The allowed VOBs are listed in the **Allowed VOBs List** and any VOB directories are placed in the **Allowed Directory Shortcut List**. Users can select from these list to navigate directly to a VOB or directory.

If the web user attempts to navigate a non-existent or prohibited location they are shown a dialog similar to the one below:



The screenshot shows a Microsoft Internet Explorer window displaying a Rational ClearCase VOB View. The address bar shows a URL starting with http://64.30.169.250:8282/ccweb/bin/ccweb?session=IY96U. The main content area shows a VOB View for 'c:\demle4' with a table of files:

✓	+	Name	Size	Modified	Version
<input type="checkbox"/>	X	README.txt	90	28 Feb 2004 3:16 AM	vmain1
<input type="checkbox"/>	X	bar.doc	69	28 Feb 2004 5:08 AM	vmain1
<input type="checkbox"/>	X	foo.doc	69	28 Feb 2004 5:09 AM	vmain1

An error dialog box is overlaid on the browser, stating: "The VOB or directory you attempted to navigate to does not exist or you do not have permission to navigate to. You were redirected to your default VOB or directory instead... If you believe this to be an error, contact your ClearCase Web Administrator..." with an "OK" button.

At the bottom of the browser window, two dropdown menus are circled in red: "Allowed VOB List" and "Allowed Directory Shortcut List".

The **Allowed VOB List** displays any VOB that you are fully allowed to navigate into if any. The list is not displayed if there is not at least one VOB to list. Selecting a VOB from the list will navigate you directly to the top of that VOB.

The **Allowed Directory Shortcut List** displays any directory within a VOB that you are allowed to navigate into if any. The list is not displayed if there is not at least one directory to list. Selecting a VOB from the list will navigate you directly to that directory in that VOB.

(Over for more on ClearWeb)

ClearWeb Overview

ClearWeb is a custom add-on to Rational Software's ClearCase product. **ClearWeb allows for triggers written for ClearCase policy to extend to users of the ClearCase web interface.** The native ClearCase for web users interface does not support interactive triggers. Interactive triggers are those that write to stdout or have any dialogs displaying to or requesting information from the ClearCase user. When Native ClearCase encounters a write to stdout or stderr from a users trigger script, the ClearCase web user is shown a non-descript error message indicating the following:

- the associated trigger failed for reasons unknown
- the trigger is possibly “interactive” and unsupported.

ClearWeb allows for any writes to stdout or stderr from your trigger scripts to be displayed to the ClearCase web-client while allowing for interactive dialogs (dialogs that request information from the user). Due to the fact that ClearWeb is user sensitive, scripts are triggered using clearprompt or similarly functioning web dialogs, depending on whether the user is a standard (non-web) user *or* a ClearCase web user.

Upon request, ClearWeb further enables organizations to add triggers for specialized purposes, while allowing for unique interactive policy based on the type of user (web user or non-web user). Interactive dialogs allow the client to answer questions or make selections before proceeding allowing extended policy that includes the ability to an existing local ClearCase/ClearQuest integration over the web.

The Native ClearCase Web interface provides no per/user security in that all VOBs that are within the default region of the ClearCase Web Server are accessible for all users. In order to provide different VOB access for different users multiple ClearCase Web Servers must be purchased. **ClearWeb allows for a user to VOB matrix to be created so that the ClearWeb Administrator can limit the VOBs that their web users have access to from the web (this also extends to directories within VOBs). Now a single ClearCase Web Server can serve many user/user groups with different VOB/directory access rights.**

The Native ClearCase Web interface provides ability to limit when a user can access the ClearCase Web Interface; therefore there is no ability to limit access to users during scheduled VOB/Web server maintenance, backups or to just the times when the support organization can support the web users. **ClearWeb allows a user/time matrix to be created so that the ClearWeb Administrator can limit when a user or group of users can access the ClearCase Web Interface.**

The Native ClearCase Web interface only supports a limited set of cleartool commands (checkout, checkin, uncheckout, update) **ClearWeb extends this by allowing for over 120 more cleartool commands than the native ClearCase Web interface and an unlimited number of non-ClearCase commands.**

ClearWeb facilitates communication between geographically disjoint development groups by providing a common communications platform between these groups (the ClearCase Web Interface). ClearWeb users can communicate with their ClearWeb peers (within the company – or other companies) to ask or answer questions (ClearWeb related or not) right from the ClearCase Web interface.

Due to the complete integration of ClearWeb with ClearTrigger, all triggers are automatically web-ready for both stdout or stderr and ClearTrigger created dialogs. Simply install and configure ClearWeb on the server to get started!

Facts

ClearWeb was developed to extend the usefulness of ClearCase Web Clients. With ClearWeb all interactive triggers defined locally can work over the web as well (this includes writes to stdout and stderr as well as interactive dialogs). Additional cleartool command (over 120 more) and even non-cleartool commands are available to the ClearCase user and such commands are made available to users by the ClearWeb administrator on a user by user basis. ClearWeb administrators can control which VOBs (or directories) their web users can navigate to which allows a single web server to server data for multiple groups that cannot share data (less web-servers to purchase). The ClearWeb administrator can even control when users can access the ClearCase data on a per user basis. ClearWeb adds communication features to enhance the collaborative development effort. ClearWeb even brings the ClearCase Graphical Vtree Brower and it's functionality to the Web with web-enabled Vtree Browsers.

ClearWeb expands the ClearCase web functionality, increases security and administrative control while allows the same ClearCase policy developed for local work to extend to the web interface.

System Requirements	
Supported Operating Systems	ClearCase Supported Operating Systems
Required Software	ClearCase 5.0 or higher.
Minimum Configuration	All minimal ClearCase configurations are sufficient to run ClearWeb.

License Requirements	
Minimum License Requirements	Most companies will need only 1 license per ClearCase Web Server.
License Fee	For ClearWeb: Refer to A Better Solution, Inc. – ClearWeb Pricing

Feature Matrix	Supported in...		
	ClearWeb	ClearCase Web Client	ClearCase Remote Client
Interactive Triggers	X		(limited)
Supplemental Commands (Additional 120 cleartool commands) mkvob, mkbtype, mklbtype, mklabel...	X		
Supplemental Commands (infinite non-cleartool) scripts, tools, system commands, 3 rd party tools...	X		
Per User VOB/Directory Visibility Matrix	X		
Per User Time Navigation Matrix	X		
Remote Administration	X		
Peer-to-Peer Mail	X		
User reports/diagnostics	X		
Administrator Alerts	X		
Custom Application Access	X	(Limited)	(Limited)
ClearCase Vtree Browser	X		(Limited)
Code Search Integration	X		

To read more about ClearWeb, visit

http://www.abs-consulting.com/abs_consulting_products.html